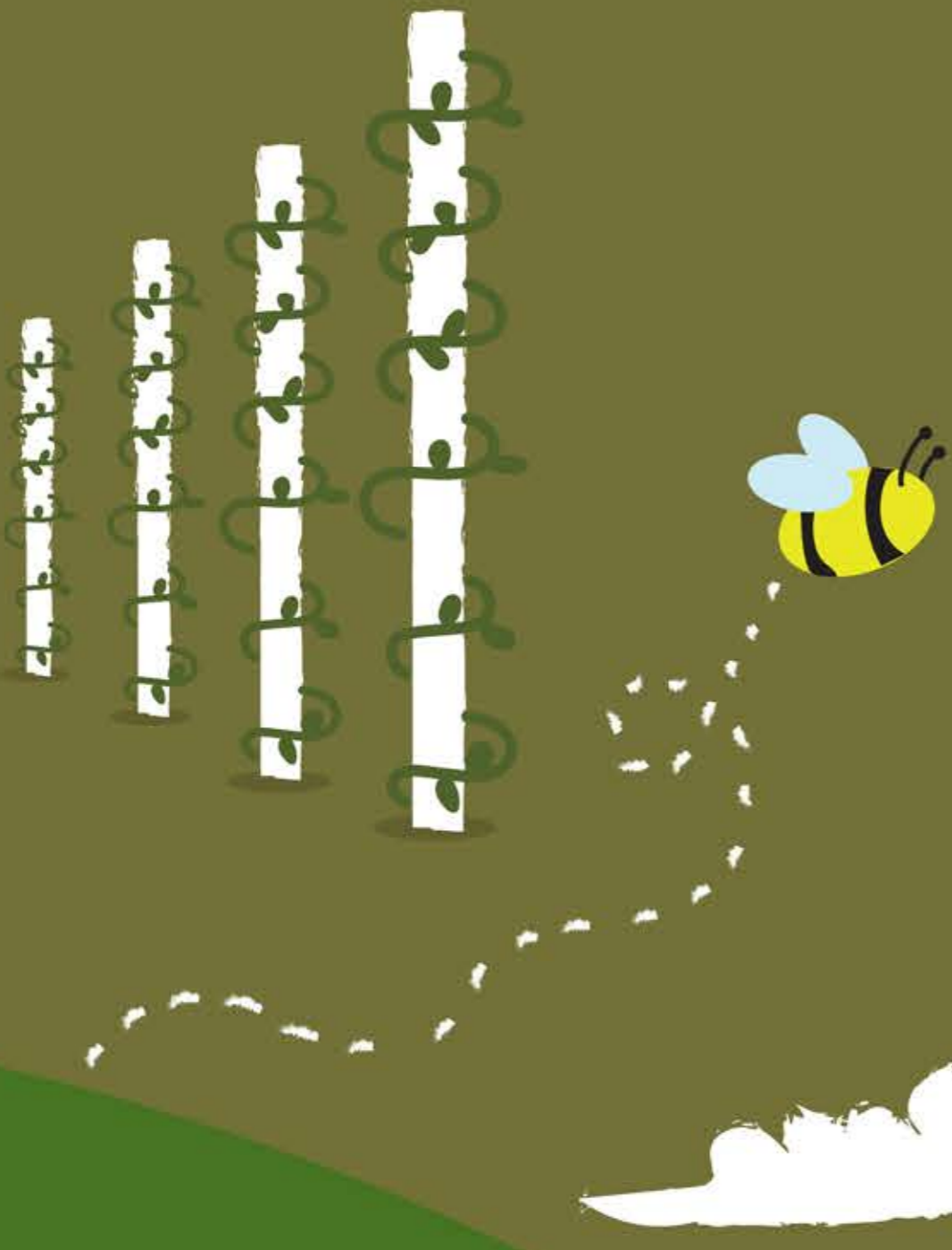


# GREEN FUTURES in AGRICULTURE & FOOD PRODUCTION

Agriculture and food processing are big business across Norfolk and Suffolk with companies ranging from micro-enterprises to major food processing enterprises. Many of these organisations are working towards sustainable practices such as reducing fertiliser use on farm, improving soil health for carbon capture, creating habitats for nature recovery and establishing woodland to help tackle the effects of climate change.

## DID YOU KNOW

Vertical farming, using a controlled environment, enables a wide range of foods to be grown locally, with lower consumption of water and very few chemicals needed. Fischer Farms has built one of the world's largest vertical farms on the Food Enterprise Park in Norwich.



## Employment

You can get into a career in farming through an apprenticeship, college course, a degree, or working your way up from a starting position. If you are between 10 and 28, you can join Norfolk or Suffolk Young Farmers' Clubs which are dedicated to supporting young people in agriculture and the countryside.

**Suffolk Rural in Suffolk** and **Easton College in Norfolk** offer a range of courses and apprenticeships in Agriculture, Arboriculture, Animal Care, Equine Studies, Horticulture & Floristry

Farmers are working hard to reduce emissions. For example, the dairy sector reduced greenhouse gas (GHG) emissions by 12% between 2000 and 2020, while still increasing milk production by 11% with 21% fewer cows.

A quarter of the planet's biodiversity is found in soil. Soil and its organisms play crucial roles in supporting food production, tree and plant health, nutrient cycling, carbon capture, water quality, and flood prevention. Farmers today need to understand how to protect and improve soil health.

Modern 'precision farming' uses advanced technology to target fertilisers and pesticides only where they are needed, and supports more sustainable farming. Strong digital skills will help future farmers to work sustainably.

## LOCAL BUSINESSES LEADING THE WAY IN SUSTAINABLE AGRICULTURE

**Holkham Estate** have been a leader in sustainable farming for decades, practising crop rotations for soil health, managing an important coastal nature reserve and investing in renewable energy. In 2023 they launched their roadmap to becoming carbon-negative by 2040.

**Elveden Farms** practices environmentally responsible farming and works hard to ensure that biodiversity thrives alongside farming practices. The estate has its own conservation group which helps monitor and advise on conservation matters.

**Boxford Farms** This fruit-growing business uses farm waste in its award-winning anaerobic digestion plant to produce electricity and heat. They also use apple wood in their biomass boilers, and have invested in smart irrigation systems to minimise water use on farm.

## Agriculture job roles

### ENVIRONMENTAL ENGINEER

Environmental engineers optimise the use of natural resources, helping to develop renewable energy resources and maximise the use of existing materials as well as designing technologies and processes that control pollution and clean up contamination.

### AGRONOMIST

You could be responsible for developing methods to protect crops from weeds, pests and harsh climates as well as helping farmers to produce crops in a more efficient and sustainable way which can have a positive impact on the environment.

### FARM MANAGER

Working towards sustainable farm management, you can improve biodiversity, minimise the use of fertilisers on farm, and learn how to minimise the climate harm from dairy, poultry or pig farming, while maximising animal health.

### AGRITECH ENGINEER

You could be developing or maintaining cutting-edge technologies like automated milking machines and driverless farm vehicles as carbon and sustainability targets create a surge for modern agri-tech.

## DID YOU KNOW

The East of England region employs roughly 40,000 farm workers across some 11,000 farms.



Visit [www.icanbea.org.uk](http://www.icanbea.org.uk) or scan here to find out more about how you can have a green future in agriculture, follow the link to information on college courses, apprenticeships, and bootcamps for both adults and young people.

## DID YOU KNOW

The East of England's warm summers and flat land makes the area suitable for cropping. About 64% of England's sugar beet and 26% of total cereals are grown here.

